



PACIFIC LOGISTICS GROUP

***Pacific Logistics Group
(China)***

*— Company Profile:
China*

Asian Expertise, Global Connections

We leverage our deep Asian expertise, strong established networks, strategic partnerships and customised technology-based integrated logistics solutions to fulfill demands, even under uncertainty. Our network extends beyond the borders of our own countries and around the globe, with our membership with the IATA, WCA and GLN networks.

Our experience and expertise in the area of logistics, freight forwarding, warehousing, value-added services and e-commerce connects and mobilises the global and regional markets.

Our dedicated people, agile thinking and multimodal solutions empower our customers to achieve operational efficiencies, cut costs, lower risk and focus on their core work.

PLG is bravely seeking new frontiers and changing the way logistics operates in Asia and beyond.



About Us

Today, PLG is one of the fastest growing Logistics and Freight Forwarding companies in the region, employing a workforce of over 200 people in Singapore alone across its group of companies.

With its global connections and regional networks spanning 16 locations in 10 countries (Singapore, China, Malaysia, Laos, South Korea, Cambodia, Philippines, Thailand, Indonesia and Germany), PLG provides customised and cost-effective integrated logistics solutions to its clients, many of whom are multi-national companies.

In Singapore, PLG owns and manages a 700,000 square feet flagship corporate building and modern warehouse near Singapore's new Mega Seaport at Tuas. Combined with 5 other leased warehouses, PLG manages a massive 1.3 million square feet of warehouse space to service its diversified clientele.



OUR HUMBLE BEGINNINGS

Founded in 2000 by Mr Kelvin Lim, PLG started modestly as a freight forwarding company with 2 employees in a small office space

PLG Building (Singapore HQ)

- PLG's new building is located right next to the Tuas Mega Port
- 2 levels of office space with 25,000 square feet on each level at the roof top with a 360-degree sea view
- 100,000 square feet roof-top parking space
- Total of about 700,000 square feet floor space

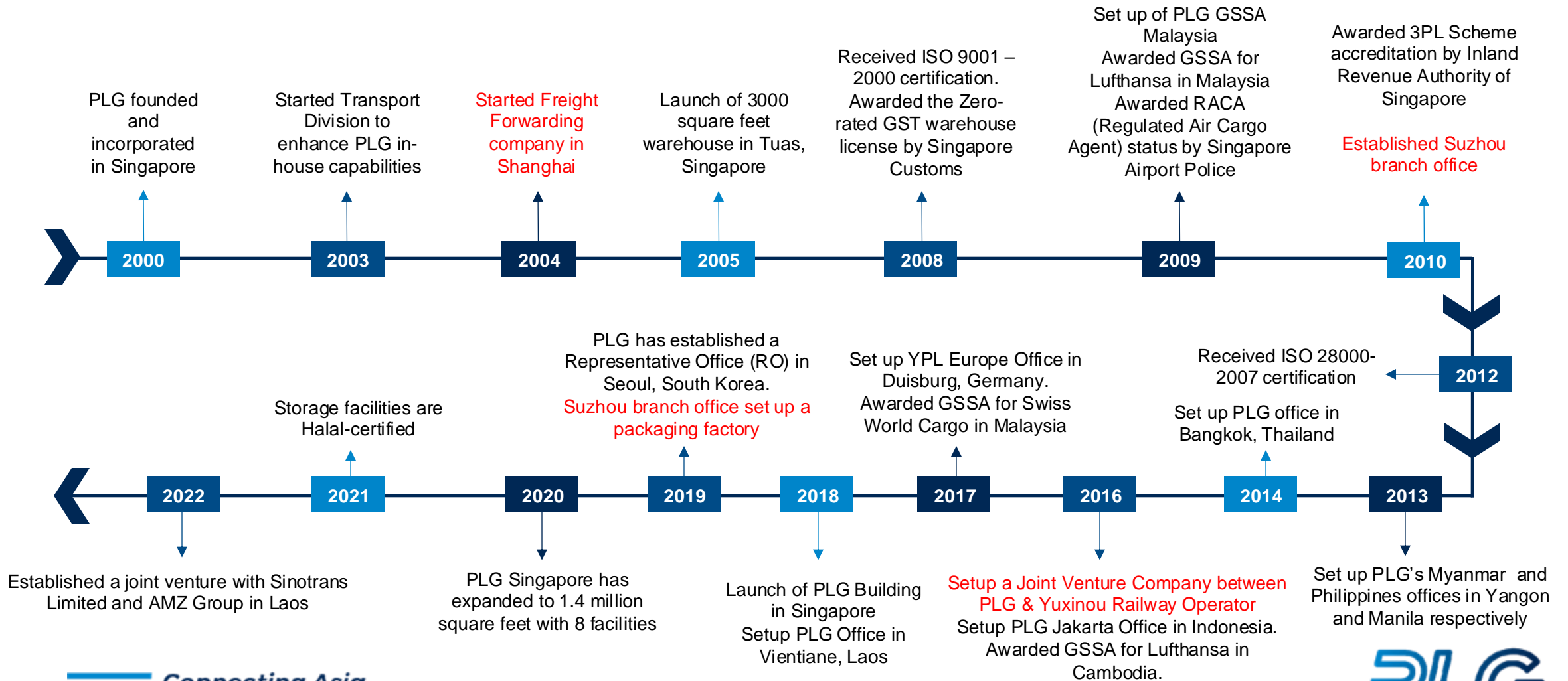


PLG Building (Singapore HQ)



| AREA | LOADING BAY | FLOOR LOADING KN/M2 | FLOOR TO CEILING HT. (M) | FLOOR AREA SQF |
|-------------------------------------|-------------|---------------------|--------------------------|----------------|
| 1 st storey warehouse | 11 | 50.0 | 8.3 | 100,000 |
| 2 nd storey warehouse | 11 | 50.0 | 8.6 | 100,000 |
| 3 rd storey warehouse | 11 | 20.0 | 8.6 | 100,000 |
| 4 th storey warehouse | 11 | 20.0 | 8.6 | 100,000 |
| 5 th storey warehouse | 11 | 20.0 | 8.6 | 100,000 |
| 6 th storey open carpark | NIL | 15.0 | 0 | 100,000 |

Our Key Milestones



PLG China

PLG China Introduction



PLG's Chinese headquarters was set up in Shanghai in 2004, offering 3PL, multi-modal and other value added services as a one stop solution provider to help clients to achieve their business objectives, all while ensuring service and quality to help our clients reap in maximum benefits.

PLG China celebrated another milestone in 2019, as we set up a wooden processing and customised packaging factory in Suzhou Industrial Park.

Corporate Values

- Logistics driven by innovation and technology is our business.
- Grooming future generations of home-grown logisticians is our passion.

PLG Freight Services



LAND TRANSPORTATION

We offer flexible management of incoming goods and offer customs brokerage and transportation clearance to warehouse for accelerated transportation across border.

AIR FREIGHT

PLG's air freight services are globally accredited. Our membership with IATA and GLN ensure that we are well connected and recognised within the freight community.



SEA FREIGHT

PLG provides the most efficient and remarkable ocean freight services through partnerships with leading carriers. We provide your business with the latest VMI technology for transparency.

RAILWAY INTERMODAL SOLUTION

Our team of specialists will provide your business with various cost effective options designed to meet your business needs.



Project Logistics

PLG provides precise planning and coordination for super project lifting of high value cargoes. Our expertise in handling and transporting of heavy loads complies with the strictest QHSE standard compliance, providing you with safe, reliable and most optimal solutions.

Our Services:

- Storage for project cargoes such as oversized steel pipes, steel plates, steel beams and TBM
- Warehouse Inventory Management
- Choking & Lashing
- Handling out of gauge cargoes
- Additional services like power brush to remove rust on steels and greasing
- Paint stencilling & Marking
- Mob & Demob services
- Well-equipped sea front facilities to handle and storage of project cargoes
- Covered warehouse for storing heavy & break bulk cargoes
- Experienced professional to handle project cargoes

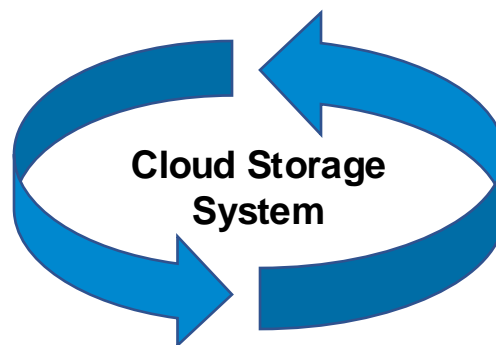


Modern Logistics – Bonded & Non-Bonded Warehouse & Distribution



Short Supply Chains - Unmanned Technology

- High Efficiency: Reduced handling, fast delivery
- High Accuracy: We leverage consumer insights and deliver precision marketing
- High Agility: Customised response, provides on-demand solutions



Artificial Intelligence Digital Platform + Omnichannel Platform

- Unmanned(Auto) Operation
- Operational Intelligence(OI)
- Decision Intelligence



Symbiosis of IOT and Digital Twin Technology

- Integrated services to support business
- Achieve mutual benefit under networked synergy
- Towards a better life in a green and sustainable economy

Value Added Services – Customised Packaging

Production Capabilities



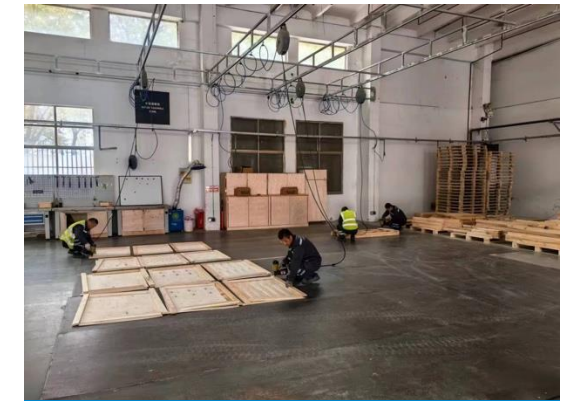
Automated Wood Cutting Machine



Digital Board Cutting Machine



Planer



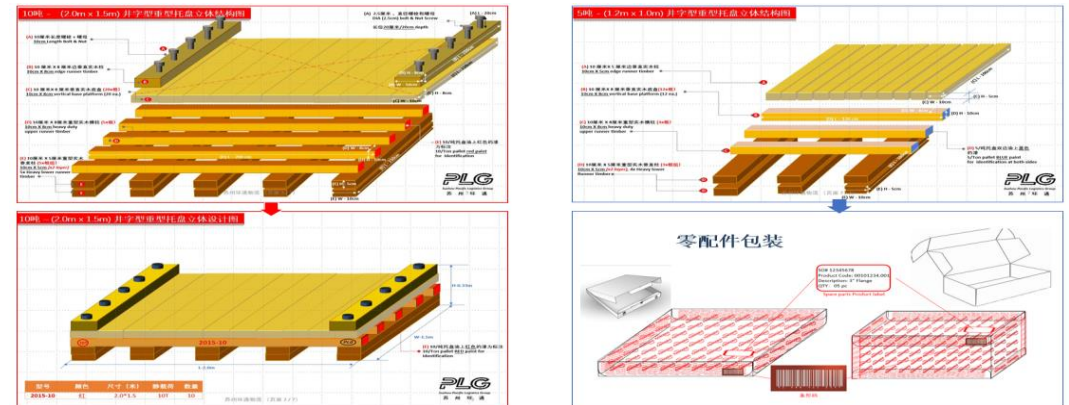
Fabrication & Assembly

Value Added Services – Customised Packaging

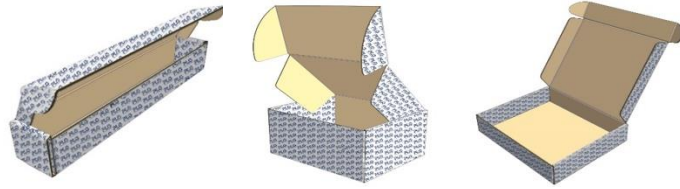
Product Examples



Solutions



Spare Part Packaging Initiative



Customise with Corporate Logo theme design onto the spare box carton.

Protective Measure Solution:

- a) Skin packing design concept
- b) EPE foam laser pre-die cutting

Tripe "S" camera picture solution + IoT services platform (To be developed by PLG)

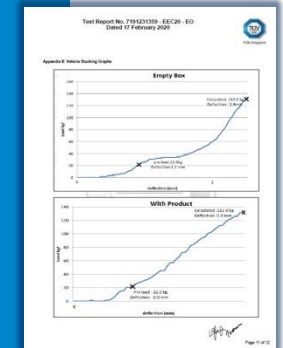
A joint effort on feeder of material handling Project TUV PSB lab test report for carton quality & performance.

Inner Box Protective Measure for spare part components

- Single or multiple sheet layers of skin heat seal packaging
- White EPE foam with thickness of > 25.4mm onwards for 4 - 6 sides as wall protection to absorb external impact during manual handling
- Customised pre-die cut mould onto EPE effectively secure products
- Packaging guarantee with barcode, QR code & seal



- Accordance to ASTM D4169-16 standard for "Drop Test"
- Accordance to ASTM D4169-16 standard for "compressive loads" for deflection effect
- To certify the ability of the package product to withstand the hazards occurring during manual handling
- To certify the ability of the package product to withstand the compressive loads that occurs during vehicle transportation



Awards and Certificates

First Shanghai-Singapore Comprehensive Cooperation Council Meeting



Singapore-Sichuan Trade and Investment Committee (SSTIC) Certificate



尊敬的林先生：

关于新加坡-四川贸易与投资委员会(SSTIC)成员连任的通知

1. 作为新一界新加坡-四川贸易与投资委员会 (SSTIC) 联合主席，我想再次欢迎您成为 SSTIC 的一员。我很高兴在此确认对环通物流有限公司的委任，从 2020 年 9 月生效至 2023 年 9 月，有效期为三年。
2. 随着四川成为成渝经济圈的中心部分，我相信您将在那里找到许多发展机会。作为一名尊敬的会员，您的参与和贡献对于我们持续助力推广新加坡和四川之间的双边合作具有重大价值意义。
3. 如果您对委员会的任何方面需要协助或说明，请随时与我们的秘书处（新加坡企业发展局）取得联系。
4. 我期待与您一起建立卓有成效的合作关系。

最诚挚的问候

总理公署部长，人力部和劳工部第二副部长 SSTIC 委员会联合主席陈诗发医生

2020 Suzhou awarded third place for Most Influential Logistics Company



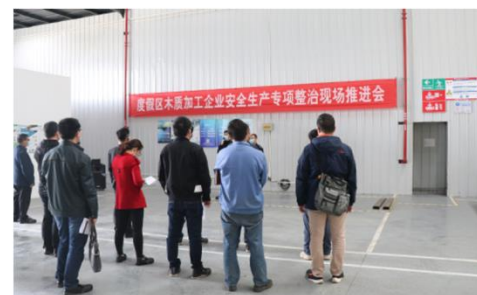
Awards and Certificates

Suzhou factory received Wood Processing Factory Benchmark Award for Suzhou Industrial Park (SIP)

Available @ SIP portal



“专”项整治 防范燃爆风险
度假区开展了一次木制品加工行业专项整治行动，邀请木质加工及粉尘涉爆领域的专家共同检查，共检查企业19家，发现隐患95条，重点针对集尘除尘设施提出整改要求，防范发生涉爆粉尘安全事故。同时，度假区还召集区内其他木质加工企业到安全管理水平较好的木质加工企业——苏州环通物流公司进行现场观摩学习。



阳澄湖半岛度假区专项整治重点领域 16家木质加工企业集体上安全生产课

时间：2020-04-25 09:32 | 来源：姑苏晚报
本文被阅读次数：87次 【页面打印】 【内容打印】 【字号大中小】

新浪微博 腾讯微博 微信 更多分享

为深入推进工贸重点监管领域安全生产专项整治，进一步提升区内木质加工企业安全管理水平，昨天，苏州阳澄湖半岛旅游度假区召集区内16家木质加工企业，召开安全生产专项整治现场推进会。本次推进会选取了区内安全管理水平较好的木质加工企业——苏州环通物流公司，召集区内其他木质加工企业一起进行现场观摩学习。现场培训后，半岛度假区在推进会上要求各企业强化安全生产底线思维，针对木质加工易燃易爆的特点，着力防范化解重大风险，做好日常安全管理。

记者 董捷通讯员 阳岩
《姑苏晚报》2020年4月25日A04版



Suzhou Industrial Park

Background:

2024 marks the 30th anniversary of the Suzhou Industrial Park, which is the first Government-to-Government project between China and Singapore

Future: Building A Smart Supply Chain Industrial Park



It aims to integrate various functions such as scientific research, multimodal transportation, smart manufacturing, financing and distribution to streamline operations and reduce costs. The primary objective is to attract cutting-edge technology in smart manufacturing and supply chain management, integrate resources effectively and stimulate the clustering of high-quality environmental projects, thereby enhancing Suzhou's smart supply chain ecosystem.

By optimising resource allocation and leveraging the advantages of Suzhou Industrial Park, the project seeks to drive the clustering of smart industries in the region. With a focus on meeting market customisation needs, the project aims to establish a benchmark industrial park featuring research and development platforms and comprehensive financial services.

Suzhou Industrial Park



Our Plan:


A Smart, High Visibility Supply Chain Management Platform




- Integrate upstream and downstream supply chain activities via our proprietary information system and cloud platform to improve coordination and communication among stakeholders, eliminating fragmentation in traditional supply chain systems
- Leverage on our supply chain management expertise to build a comprehensive supply chain network, unifying the procurement, transportation and distribution processes to create efficient and flexible operations
- With this platform, we aim to drive high-tech innovation and play a key role in Suzhou Industrial Park's smart ecosystem. The project will greatly enhance smart supply chains, talent flow, e-commerce, information technology application, and e-finance within the park. Its implementation will strengthen alliances and integrate international capital resources among enterprises, bringing significant economic and social benefits to Suzhou Industrial Park while establishing a model for a high-value-added, smart industrial economy.


Thank You!

Shanghai Office:

 Room 607, Building 1, No. 55
Aona Road, Pilot Free Trade
Zone, Shanghai, China

 +86 0512 62885508
Ext 8000/8001/8002

Suzhou Office:

 Building 3, North Gate, No. 66,
Shuangma Road, Suzhou
Industrial Park, Jiangsu
Province, China 215127



plg-logistics.com

Email/Wechat:

 customer.service@plg-logistics.cn



 微信搜一搜

 PLG 环通物流有限公司

打开“微信 / 发现 / 搜一搜”搜索